

The netViz SPECTRUM Adapter transforms information stored in one SPECTRUM database into dynamic maps and diagrams. SPECTRUM products provide an array of IP fault and performance management capabilities. Working with one SpectroSERVER<sup>™</sup>, the netViz SPECTRUM offering consists of a netViz project configured to display SPECTRUM data, a netViz controller, and a companion program that automates data transfer from SPECTRUM to netViz diagrams.

### Instantly create diagrams based on data from network discovery

Due to SPECTRUM's ability to discover devices, their attributes and the links between them, the netViz SPECTRUM Adapter automates the process of depicting a network. Instantly, objects, as well as their attributes, their positions and the links between them are populated into dynamic, hierarchical diagrams. Furthermore, the netViz SPECTRUM Adapter allows for the customization of diagrams, so customers can add non-discovered attributes and objects to get the look and feel they want. Users have the ability to tie in data from a variety of sources to achieve comprehensive diagrams.

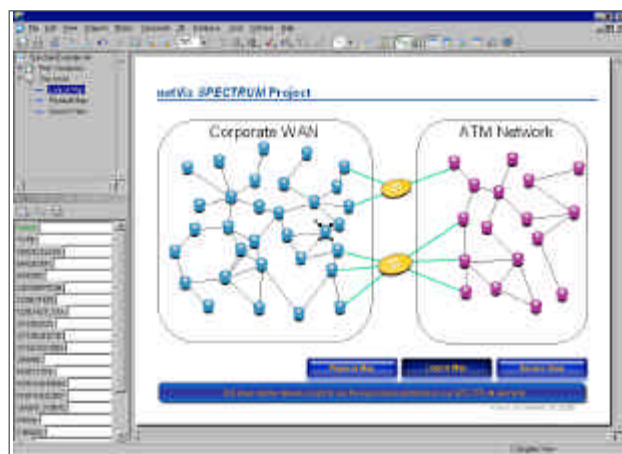
### Reduces downtime by pin-pointing a problem's location quickly

The netViz ability to display SPECTRUM alarms in all parent diagrams coupled with powerful multi-criteria search capabilities, allows finding a specific troublesome device in only seconds. In addition, netViz has built-in ping, telnet and tracer functions for SPECTRUM elements in these maps.

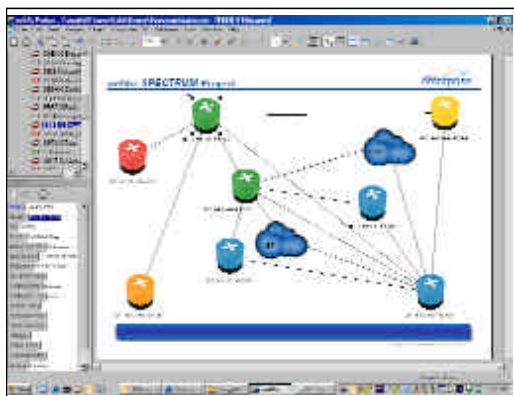
### Enhances SPECTRUM offering by providing multiple views of data and the ability to view diagrams via the web or PowerPoint

In utilizing the netViz SPECTRUM Adapter, users are able to view data in logical and physical maps. The Logical Map shows elements in the context of the network topology while in the Physical Map elements are represented as physical devices in the context of their actual locations. In addition, users are able to publish diagrams via the web to enhance collaboration efforts. Users can also export diagrams to Microsoft PowerPoint and copy and paste diagrams to other programs.

- Reduces costs by lowering mean time to repair and making it faster and easier to collect, display, share and find information
- Saves time by automating the process of populating a rich set of data into netViz: computer, server, network, device, etc.
- Empowers users to display SPECTRUM data in multiple visual representations – logical or physical.
- Creates consolidated, customized views of data from multiple sources.



▲ In addition to displaying SPECTRUM data, users can enrich diagrams even more by quickly and easily adding additional information to the netViz visuals, such as physical costs of assets, ownership, and/or maintenance information.



### Provides up-to-date diagrams due to automatic refresh from SPECTRUM data

At regular intervals, the netViz controller collects the latest SPECTRUM information and displays it in netViz diagrams. This refresh not only saves users time by eliminating the need for constant updating, but also reduces configuration errors. Additionally, the netViz SPECTRUM adapter saves a history of each refresh, so users can tell what was added or deleted in subsequent refreshes. By pulling information from one existing SPECTRUM database and automatically populating a variety of netViz maps, the netViz SPECTRUM Adapter not only gives IT management a new way to capture business content and deliver IT knowledge but also provides a return on SPECTRUM investments.

◀ The Logical Map of the netViz SPECTRUM Adapter shows elements in the context of network topology.

## netViz Enterprise Project Author

netViz Enterprise Project Author, which is included with the netViz SPECTRUM Adapter, enables business owners to accelerate decision making by allowing them to find information more quickly. Through netViz, customers can create powerful data-driven graphics, distribute the graphics via the web, collaborate, and effectively manage changes. This set of powerful components and features make netViz unique, and a solution that organizations, including many Fortune 1000 companies, rely on everyday to manage their business.

## netViz Enterprise Server

Business service problems, including IT downtime, are in most cases due to an improper change or human error. When a problem does occur, the majority of the time to resolve is spent on locating the source. netViz Enterprise Server is a powerful solution to this problem. Use it to manage your business and monitor the changes that are taking place in their actual business environments.

## netViz Enterprise Web

netViz Enterprise Web enables customers to view maps and diagrams through a web browser. In addition, users can view annotations and data about the displayed icons. A powerful, built-in search engine allows users to quickly find configuration items across the infrastructure.

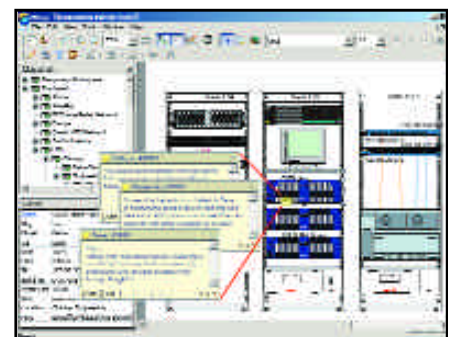
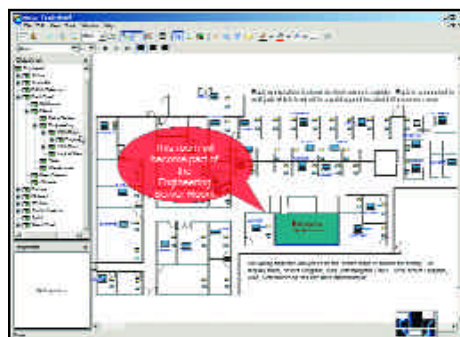
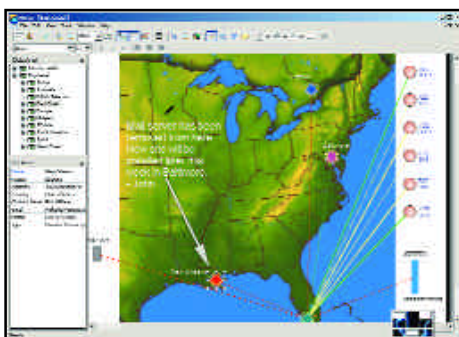
## netViz Enterprise Client

With netViz Enterprise Client, users can mark up and annotate diagrams right from their desktop without altering the netViz enterprise project data. All annotations are viewable by others in real time to allow rich communication across the enterprise.

netViz  
www.netviz.com

12 South Summit Avenue, Suite 300  
Gaithersburg, MD 20877  
Within the US: (800) 827-1856  
Outside the US: +1 (301) 258-5087  
Fax: (301) 258-5088

For more information, go to:  
<http://www.netviz.com>



*As a scalable visualization solution, netViz provides drill-down capabilities from a global view with data-rich graphics in between each layer. Online collaboration and discussions enhances the graphics and makes management of changes a reality.*

## Key Benefits

**Increase Business Intelligence** — By enabling customers to visualize their disparate data in multiple representations, netViz makes it easier for executives to react quickly to the latest industry trends.

**Automate Documentation** — As the underlying SPECTRUM data changes in your environment, netViz visuals can be set up to change automatically.

**Reduce Mean Time to Repair** — Multi-criteria search and unlimited drill-down capabilities with inter-diagram linking of objects make finding information about outages quick and easy.

**Strengthen Security** — Users can restrict access to maps and diagrams based on each user's security profile.

**Decrease Operator Errors** — Ability to add notes, mark-up and communicate directly on

maps and diagrams in real-time, avoiding application outages.

**Implement Change Controls** — Ability to see, record and search all changes taking place in the IT infrastructure, application or business process.

**Decrease Response Times** — Trouble-shoot problems easily with quick access to data stored in centralized repository.