

Creates maps and diagrams and links them to data sources for powerful real-time visualization of information.

Improve Efficiency by Seeing How Your IT Infrastructure Supports Business Processes

A consolidated visual representation of IT resources, corporate assets, and business process information can enable an organization to reduce risk, increase its ability to adapt to market and technology changes, and reduce investments in duplicative efforts. It is easy to store enterprise information in spreadsheets, databases and manuals, but it is not easy to understand information well when depicted that way. While conventional drawing or diagramming tools allow you to display data, those drawings are not connected to the raw data they represent, so graphics quickly become outdated. To optimize business processes and infrastructure, it is becoming increasingly important to align business process information with the IT components that support those processes.

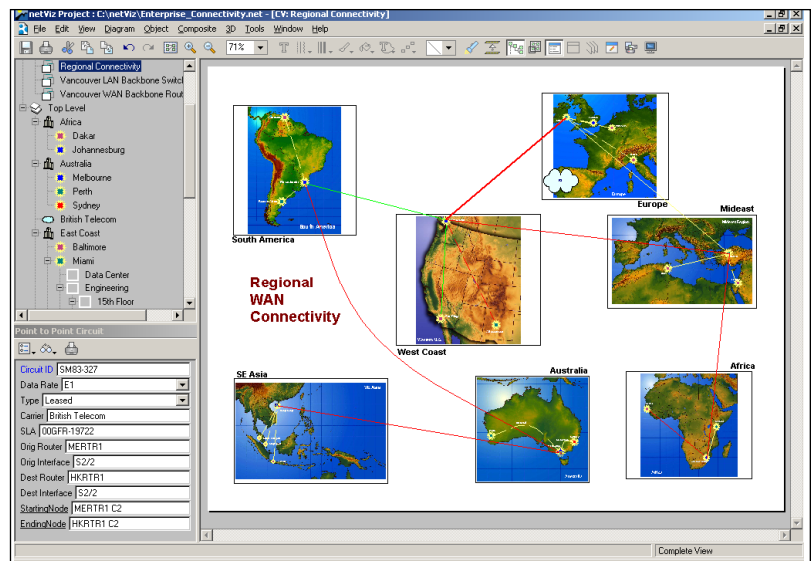
Benefits Summary

- Drastically reduce mean-time to repair—find specific assets by data value.
- Minimize time spend in keeping documentation up to date with real-time documentation.
- Save time in planning and installation procedures—with most update to date infrastructure information.
- Understand the relationship of business to IT with consolidation of enterprise data.
- Manage change by sharing and collaborating online.
- Decrease manual labor time via automation in network and business diagramming.
- Increase productivity by reducing duplication of effort.
- Maximize asset utilization by detecting stranded assets and reassigning them.

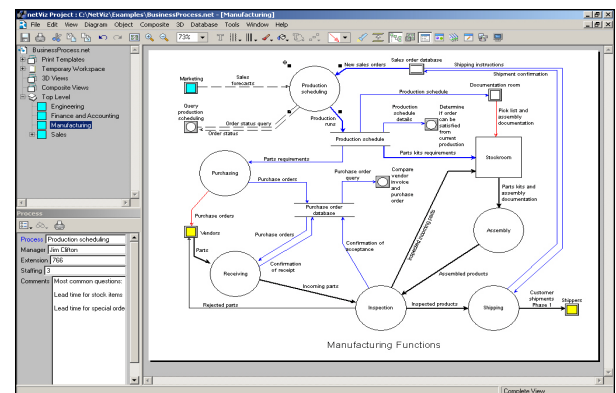
Ultimate Flexibility in IT & Business Documentation

netViz goes beyond IT documentation; it consolidates the IT information with the business entities it supports. With complete information you can really 'see' and prioritize IT to support the business. netViz makes this easy by allowing you to create powerful visuals based on a set of business processes and IT data that you already have.

- Reduces manual labor by linking visual representations of data with existing spreadsheets and databases to keep maps and diagrams up to date.
- Allows users to quickly understand their IT infrastructure related business processes through drill-down hierarchy navigation.
- Delivers outstanding innovation thanks to 20 years of experience.



▲ See the complete 'as-built' infrastructure from a global view to a port level view.



▲ Easily map business processes and IT infrastructure together to show how IT supports the business.

"The bottom line is that we've got an enormous amount of information in different places. netViz helps us consolidate and visualize the data we need to do our jobs."

—Perot Systems

Do you want to see what the business procedures look like for a given department in your organization? Do you also want to see what IT components support those business processes? With netViz, it is not only possible to document your IT, but also document everything else that ties into the IT. And since netViz displays can be data driven, you can be assured that the information is always up-to-date and automated. The same information can also be used to create audience specific displays.

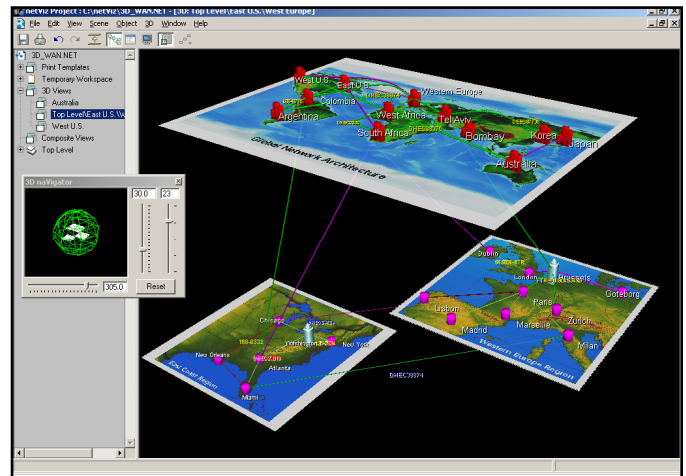
Collaborative & Distributed

The ability to have access to information about the organization's systems and processes is critical for business continuity, surviving the loss of key employees, and making smart decisions. netViz Enterprise allows sharing of enterprise information in a web-based, graphical, and collaborative environment.

Securely Share Your Documents via netViz Enterprise Server

Once your netViz projects are created, you can share them online with netViz Enterprise. netViz Enterprise combines all of the netViz capabilities to enable effective management of changes by allowing stakeholders to update, mark-up, and annotate diagrams right from their desktops. Furthermore, netViz Enterprise ensures that your business documentation remains accurate and delivers the right information to the right people at the right time. With its ability to display stakeholder input in real time, netViz Enterprise is also a great way to communicate graphically, across the office or around the globe.

► netViz's 3D viewing capabilities provides true views to your infrastructure as it is built – in 3D.



netVizLLC
www.netviz.com

12 South Summit Avenue, Suite 300
Gaithersburg, MD 20877
Phone: (508) 486-4411
Fax: (301) 258-5088

For more information, go to:
<http://www.netviz.com>

Key Features

Driven by Database Connections—Easily connects directly to your databases, spreadsheets, and other data sources, and stays connected. As the data in your data sources changes, netViz graphics change automatically.

Data-Embedded Graphics—Each graphic object in netViz can have an unlimited number of custom data fields associated with it. When you select an object, all the details about that object are displayed.

Hierarchical and Inter-Diagram Linking—Unlimited drill-down capabilities with inter-diagram linking of objects. When you select an object in netViz, you can see all the data, and the association of that object to other objects and entities.

Automation Behaviors—netViz offers automation behaviors found in no other documentation solution. As the underlying data changes in your environment, netViz visuals can be set up to change automatically.

Vast Graphical Library—netViz makes it easy to create IT, business, or any other custom diagrams by providing over 65,000, including vendor-specific network components.

Macro Fields—netViz's embedded graphics data can be set as Macro Fields to calculate compound values or gather data from elsewhere in the project. This powerful feature is a great way to add intelligence to your netViz documentation.

3D Viewing—netViz can show your systems the way they exist in the real world - in 3D

Powerful Searching Capabilities—Finding specific items in netViz multi-layered diagrams is a snap. Multi-criteria searching capabilities enable you to find what you are looking for quickly.

Integrated with netViz Enterprise—With its built in tools, netViz Project Author makes it easy to connect to data sources, creating the diagrams and publish them on a routine schedule.