

Outstanding security platform that provides data encryption to protect maps and diagrams and robust authentication to prevent unauthorized access to information.

### Increase Business Velocity by Securely Consolidating Enterprise Information

Providing access to information about your organization's systems and processes is critical for improving business continuity, surviving employee turnover, and making smart decisions. The netViz<sup>®</sup> Enterprise solution is designed for medium to large organizations that need a consolidated repository of business and IT information and relationships in a graphical, user-friendly environment. With netViz Enterprise, teams and individuals within the organization create, distribute, and share graphical representations of their business world to key stakeholders. This collaboratively-built documentation improves your daily business operations.

### Decrease Operator Error by Improving Employee Communication

By enabling users to create and share notes and annotations online, netViz Enterprise improves communication between key stakeholders, increasing awareness of recent and pending changes to IT infrastructure and related business processes. By increasing knowledge of changes, administrators can keep key stakeholders informed while at the same time restricting access to configuration consoles, reducing operator errors. netViz combines various types of information into a single, multi-level visual repository that can

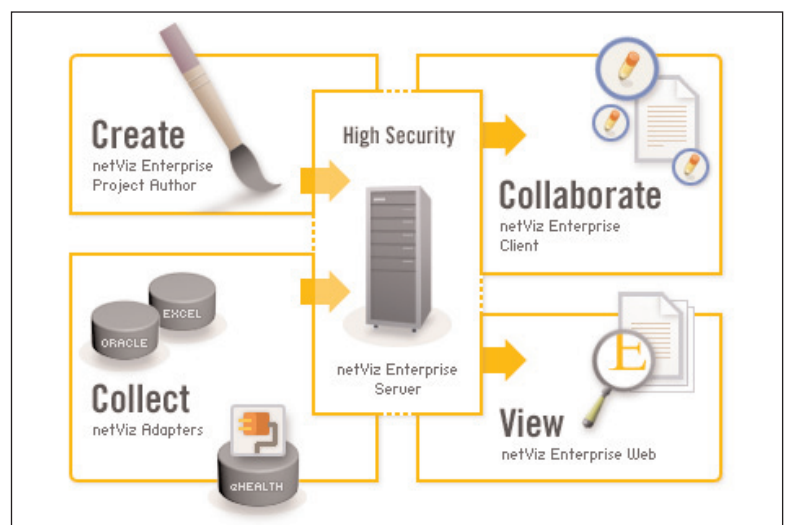
- Show how one business entity affects another
- Expose bottlenecks
- Reveal opportunities for improvements
- Become an integral tool for your daily business management

This dynamic and comprehensive documentation approach of netViz allows you to preserve institutional knowledge to accommodate personnel turnovers, recover from facility failures and make better-informed business decisions.

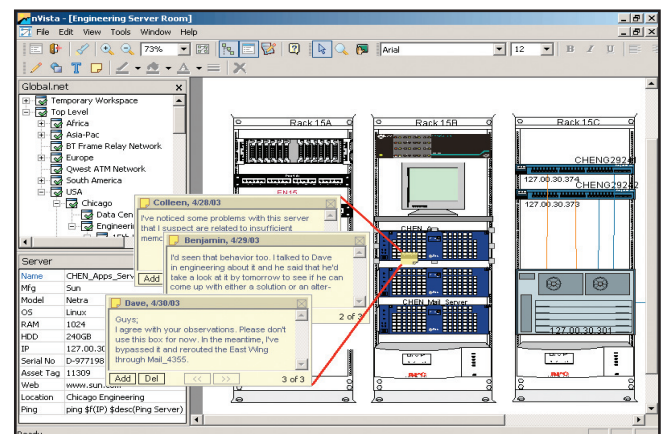
### Effective Management of Changes Through Collaboration Engine

netViz Enterprise enables management of changes and reduces downtime by enabling open communication about the changes that are taking place in the environment. Giving stakeholders an active role in collaborating on IT changes and business processes means that it will always reflect current information. Effective management of changes is achieved by allowing stakeholders to update, mark-up and annotate diagrams right from their desktops, and communicate graphically, across the office or around the globe. With netViz Enterprise, your enterprise documentation is graphical and centralized, yet distributed, and most importantly, current.

- Raises employee productivity and efficiency by consolidating data.
- Reduces application downtime by making it easy to gain access to information.
- Increases business and IT adaptability by consolidating IT resources, corporate assets, and business process information into a single visual repository.
- Enables effective management of changes in the business and IT infrastructure via innovative collaboration tool.
- Maximize value of change management procedures by bringing people and information together.



▲ netViz Enterprise enables consolidation of related information and processes, which are typically isolated, and can show the relationships and dependencies.



▲ Unlike flat, single page, two-dimensional documents that become obsolete as soon as the project is completed, netViz Enterprise provides a means to easily and continuously build upon and improve the business documentation and its efficiencies on an ongoing basis, with real-time online collaboration.

## Control Changes via new Policy Tool

Capacity planners can improve their change management processes by requiring stakeholders to submit requests for configuration changes through netViz Enterprise client. Then, network administrators can view and implement each request, recording their configuration changes in the Enterprise client's note field. By implementing a change management process, CIO's can reduce configuration errors and improve application uptime.

## Distribution & Collaboration

netViz Enterprise combines all of the netViz capabilities to let you create powerful data-driven netViz graphics, distribute the graphics via the web, collaborate, and effectively manage changes. This set of powerful components and features make netViz unique, and a solution that organizations, including many **Fortune 500** companies, rely on everyday to manage their business.

Business service problems, including IT downtime, are in most cases due to an improper change or human error. When a problem does occur, the majority of the time to resolve is spent on locating the source. netViz Enterprise is a powerful solution to this problem. Use it to manage your business and monitor the changes that are taking place in their actual business environments.

By enabling updates and collaboration online within netViz Enterprise, every stakeholder is aware of the changes that impact the environment. By having this complete knowledge of changes, the ability to quickly find all changes regardless if it is an IT-related or business process related, any resulting issues related to these changes can be resolved quickly.

## Graphical Representation of Data

netViz Enterprise presents complicated data graphically. And because netViz Enterprise graphics are visual representations of underlying data:

- The graphics can change automatically with underlying data changes.
- Relationships can be tracked between objects, so you can see how things are connected across vast systems.
- Users can search for specified objects within thousands of objects, based on multiple criteria.

## Key Functionality

**Increase Business Intelligence**—Browser based viewing enables customers to visualize their disparate data in multiple representations; netViz makes it easier for executives to react quickly to the latest industry trends.

**Automate Documentation**—As the underlying data changes in your environment, netViz visuals can be set up to change automatically.

**Reduce Mean Time to Repair**—Multi-criteria search and unlimited drill-down capabilities with inter-diagram linking of objects make finding information about outages quick and easy.

**Strengthen Security**—With five levels of security, users can restrict access to maps and diagrams based on each user's security profile.

**Decrease Operator Errors**—Ability to add notes, mark-up and communicate directly on

maps and diagrams in real-time, avoiding application outages.

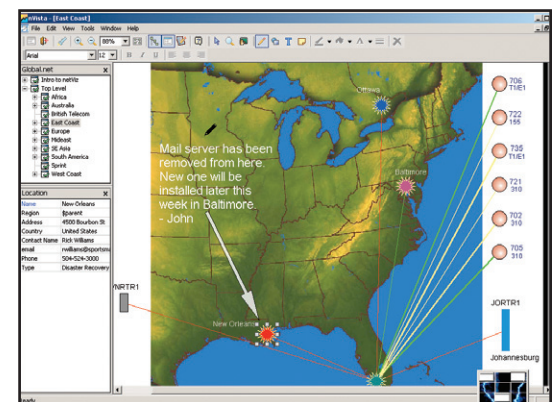
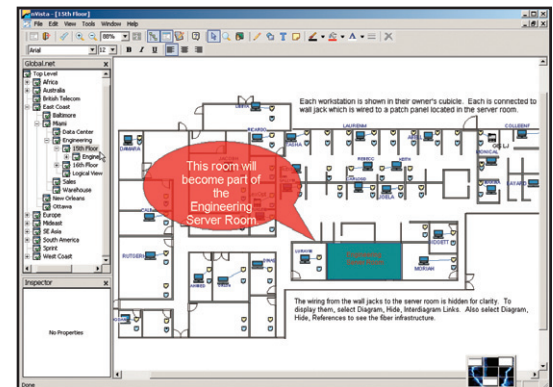
**Implement Change Controls**—Ability to see, record and search all changes taking place in the IT infrastructure, application or business process.

**Decrease Response Times**—Troubleshoot problems easily with quick access to data stored in centralized repository.

netVizLLC  
www.netviz.com

12 South Summit Avenue, Suite 300  
Gaithersburg, MD 20877  
Phone: (508) 486-4411  
Fax: (301) 258-5088

For more information, go to:  
<http://www.netviz.com>



▲ Users can mark up and annotate diagrams right from their desktop without altering the netViz Enterprise project data. All annotations are viewable by others in real-time to allow rich communication across the enterprise. This environment eases analysis of design and change assessments.