

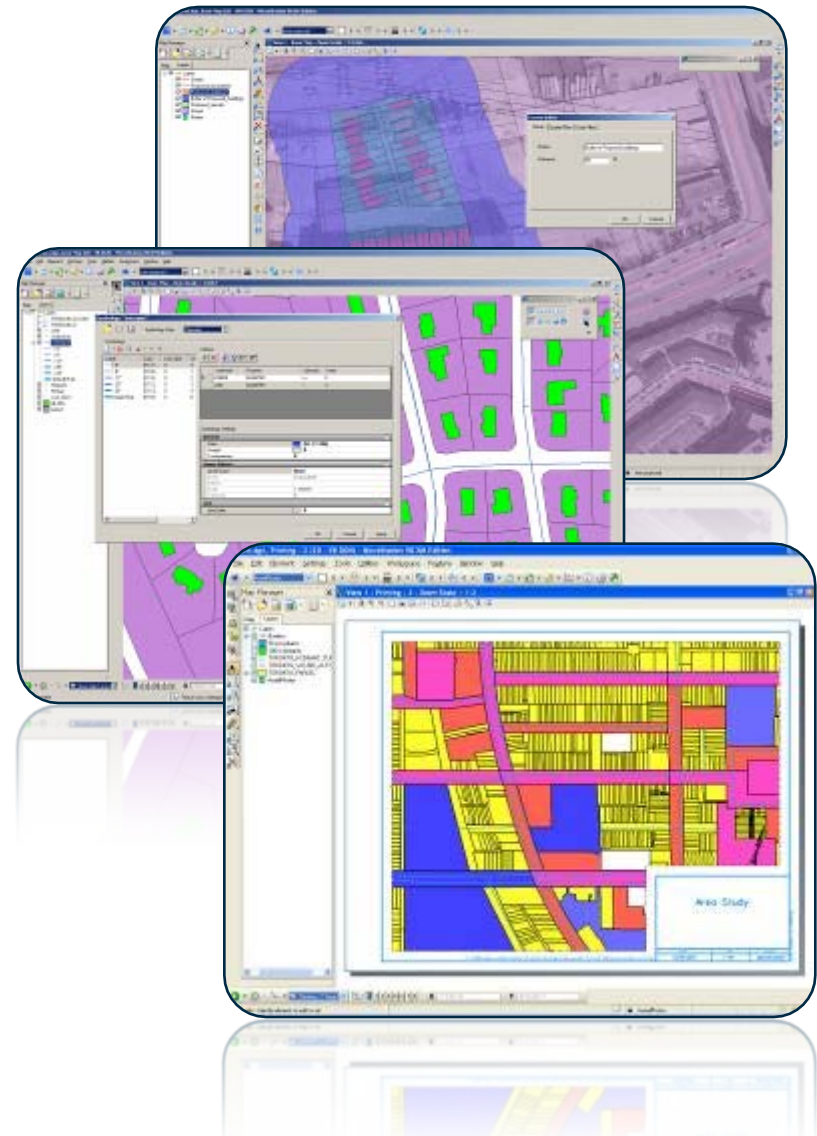
Bentley Map V8i Overview

(*SELECTseries 1*)

Advancing GIS for the World's Infrastructure

Presentation Overview

- Why would you need Bentley Map?
- What is Bentley Map?
- Where is Bentley Map Used?



You Need Bentley Map When Your Work Requires a Tool to...

- Assemble geospatial/non-geospatial data from different sources to produce thematic maps and reports
- View and edit geospatial data from file based GIS formats or spatial databases
- Execute smart 3D object editing
- Execute spatial analysis
- Produce data models and editing tools for different geospatial applications
- Create industry-specific GIS applications through customization
- Label and annotate geospatial data

What is Bentley Map?

Comprehensive desktop GIS for mapping and infrastructure:

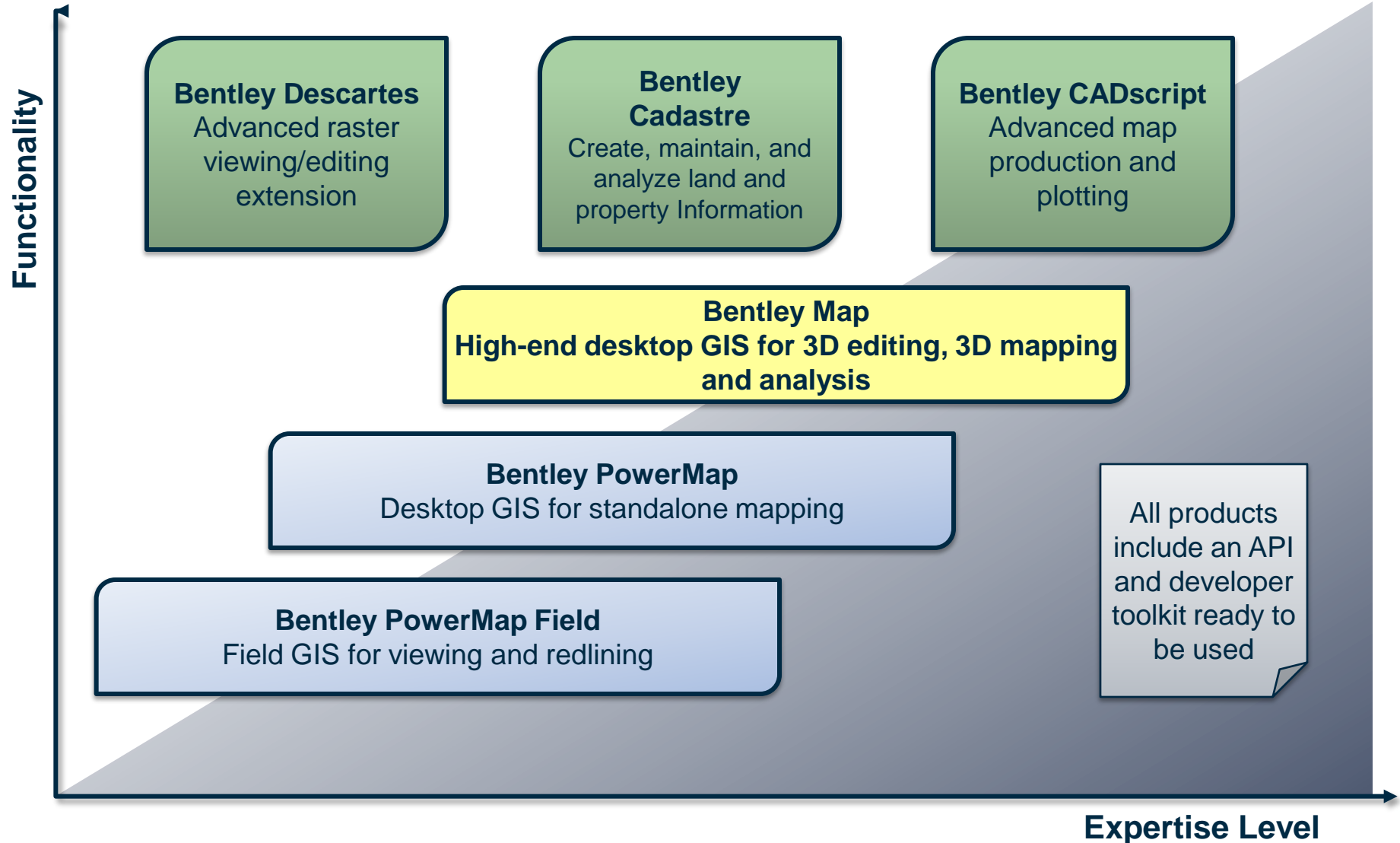
- Efficient data compilation and editing
- Design, build and publish accurate maps
- Enforce business and topological rules
- Administration tools provided to define rules for intelligent features
- All the power of MicroStation V8i
- Platform for building intelligent facility models
- Brings CAD accuracy, ease-of-use and efficiency to GIS
- Fully compatible with Bentley's AEC applications

Is Bentley Map Right For You?

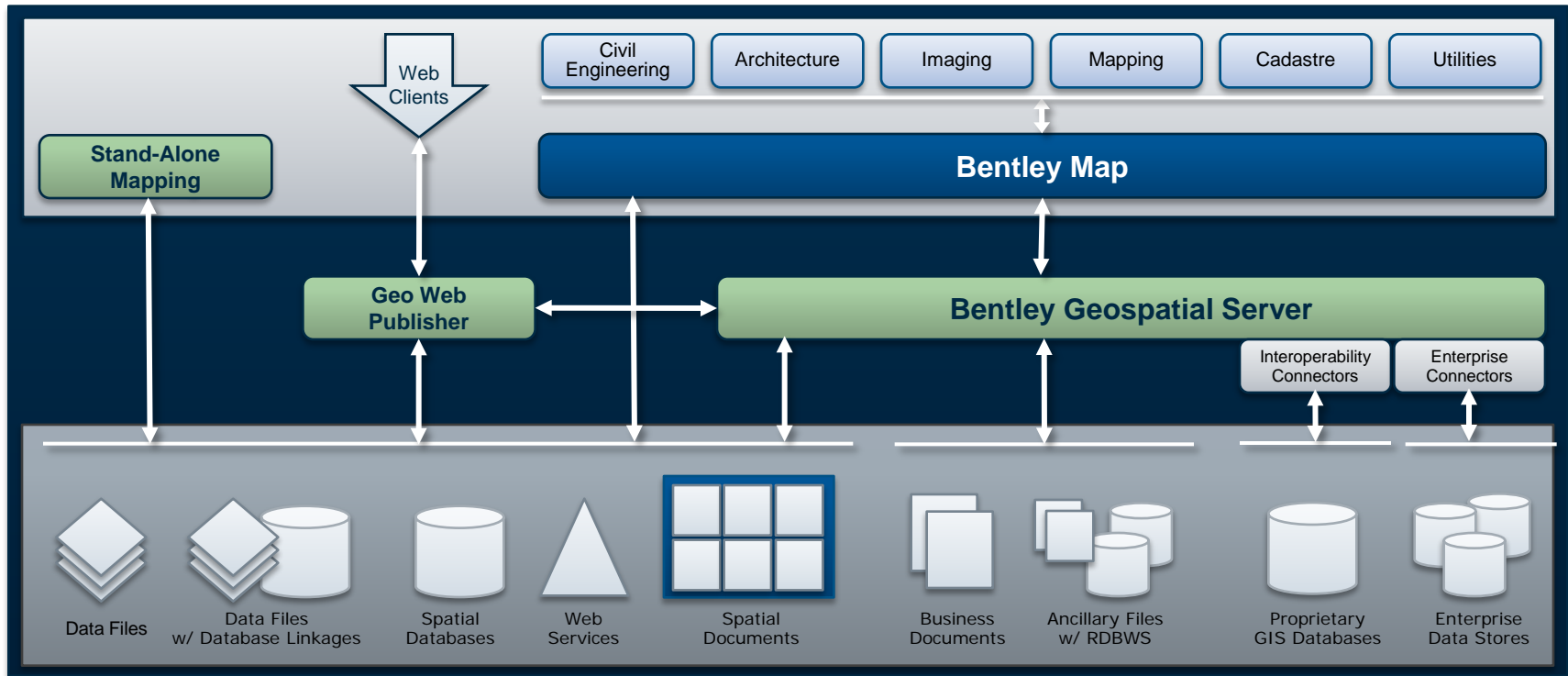
Yes! Especially if you are:

- A MicroStation or AutoCAD user who wants intelligent GIS features and GIS functionality
- A GIS user who wants an open, extensible GIS environment that includes all the capabilities of MicroStation
- A MicroStation GeoGraphics user who wants a more robust, flexible GIS environment based on V8i
- Committed to Oracle Spatial as an enterprise standard
- An infrastructure professional who wants a single environment for all aspects of your work
- An AEC or civil application user who wants to add geospatial context and GIS capabilities to his current environment

Geospatial Desktop Product Line

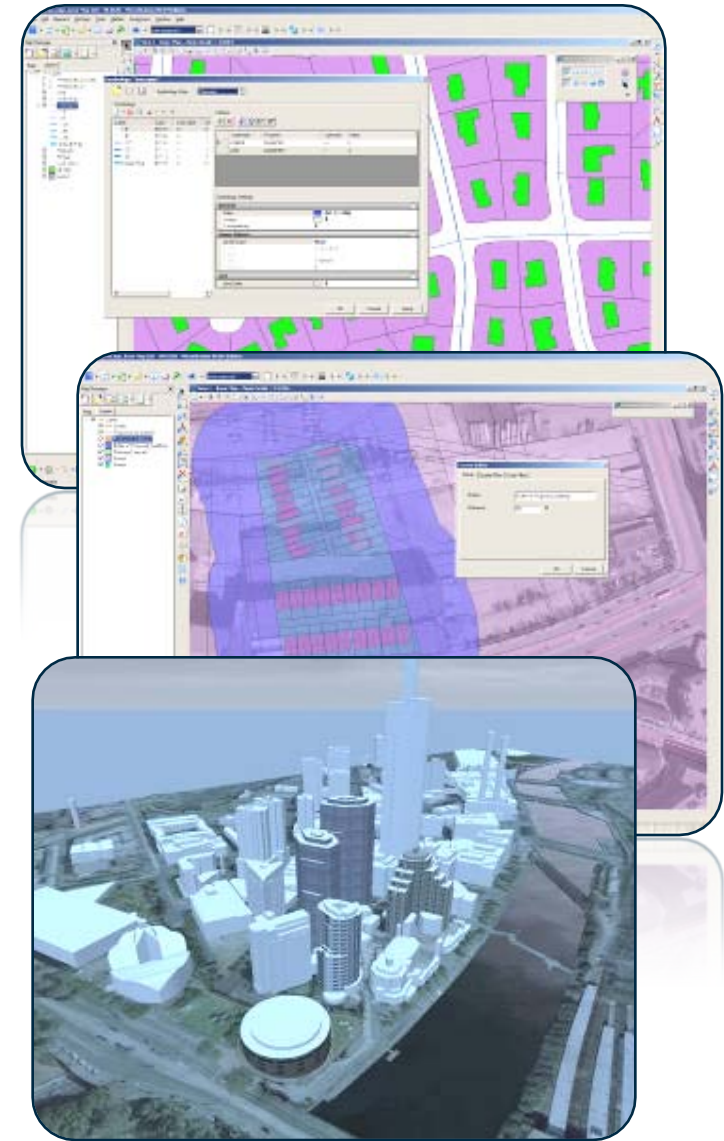


Geospatial Architecture



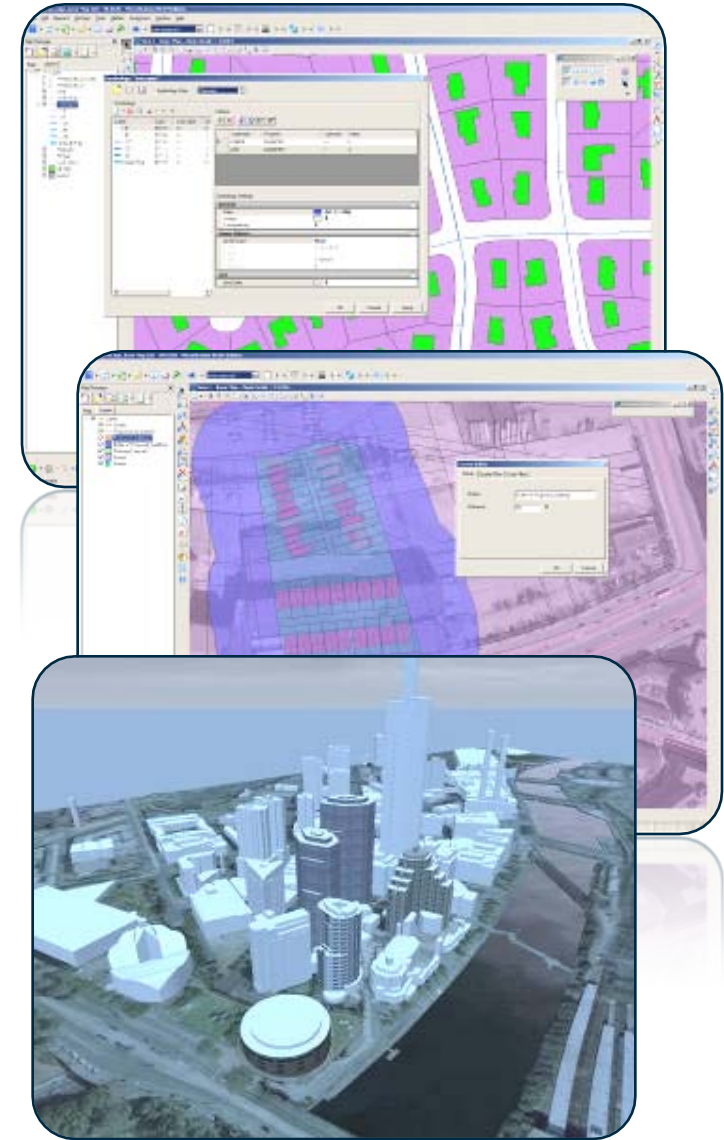
Top Features

- Topology model and maintenance
- Spatial analysis and presentation
- Data cleanup tools
- Polygon split/merge
- Interoperability (GML, SHP, MapInfo, Oracle Spatial)
 - Publish to i-model (for use in ProjectWise Navigator)
 - Attribute values used as the imported element elevation
- GIS development platform



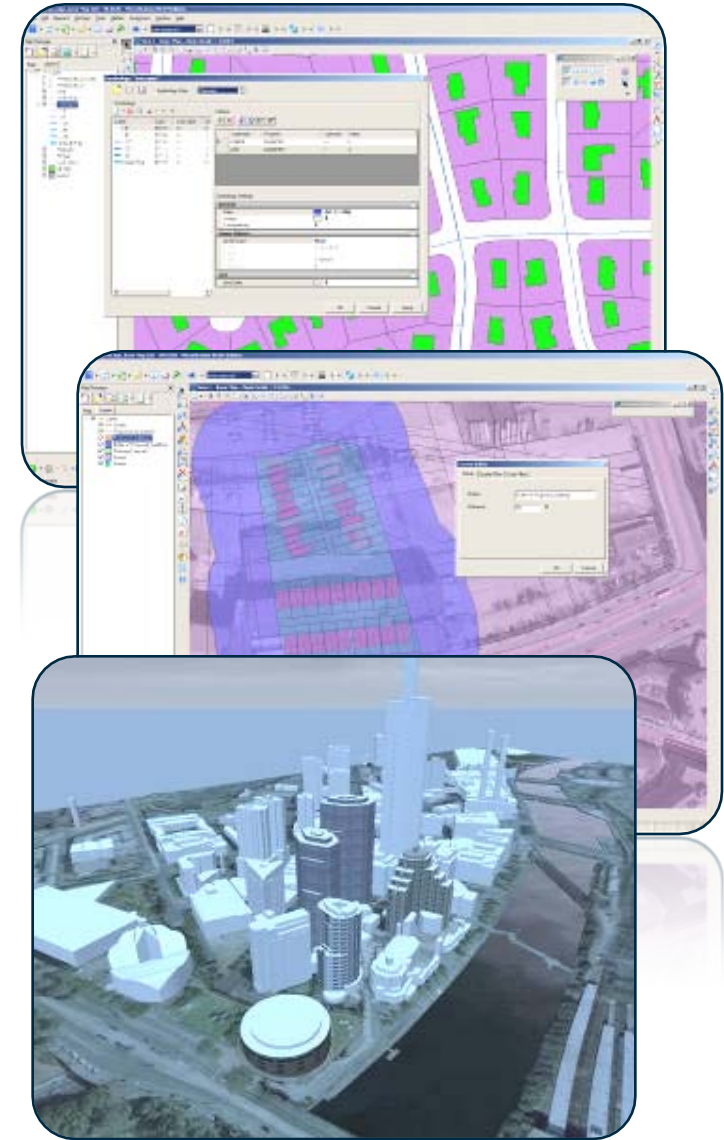
Top Features

- 3D smart object editing
- XML Feature Modeling with Geospatial Administrator
- Oracle Spatial editing
 - 3D objects support
 - ProjectWise links and design links support with Oracle Spatial persistence
 - Simpler register feature process
- Dynamic labeling of features



Top Features

- Joins between features
- Promote to XFM tool
- Search, browse and report
 - Multi-features attribute editing
- Map Manager
- Map generation and print preparation



Top Features

- Georeferenced PDF
- WMS client
- Google Earth (import/export)
- AEC georeferencing
- GPS tracking



Bentley Map Value Proposition



3D City GIS

Urban Planning

Noise Simulation

Shadow Analysis

Bentley 3D City
GIS

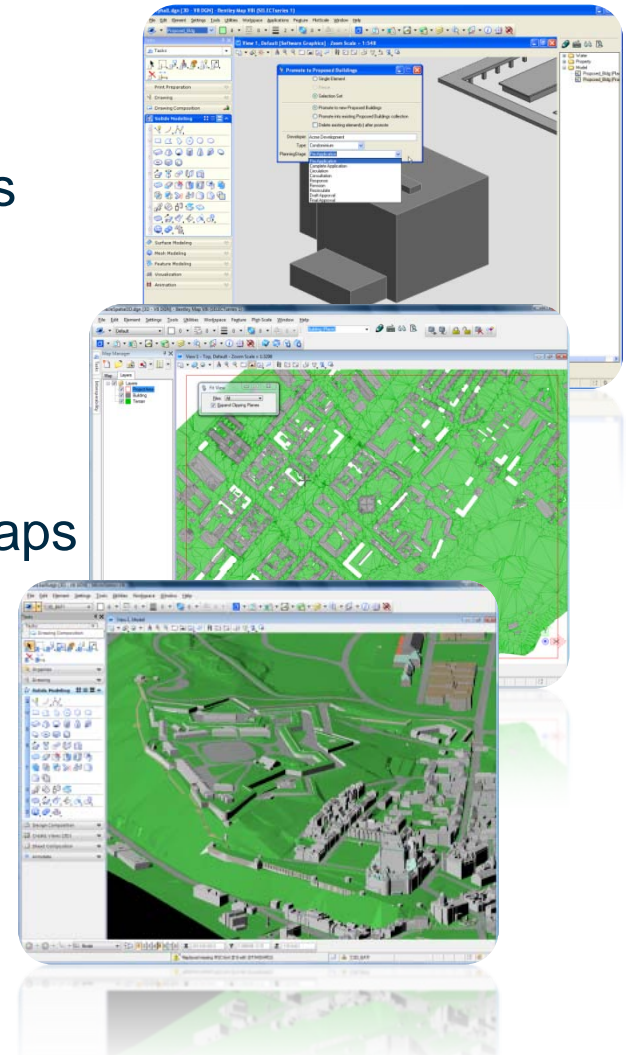
3D Analysis and
Design

Public
Relationship
Management

Natural Disaster
Mitigation

Bentley Map in 3D City GIS Workflows

- The centerpiece of any Bentley 3D City GIS
- 3D data creation tool
 - Allows the modeling of smart 3D objects
 - Works with Oracle Spatial 3D
- 3D data analysis tool
 - Supports the creation of 3D thematic maps
 - Inspect attributes, produce reports
- 3D development platform
 - For cities
 - For contractors



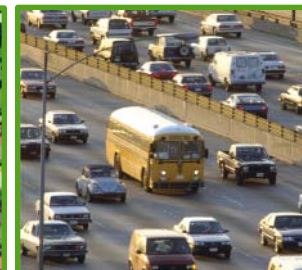
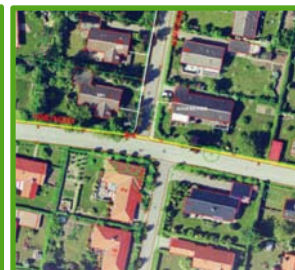
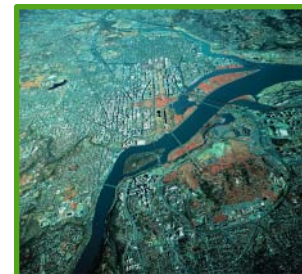
Used worldwide in multiple industries

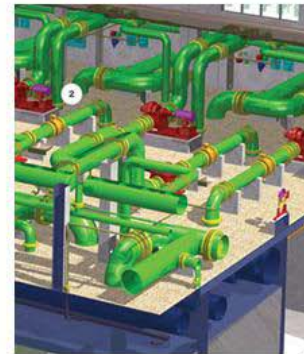
• Industries

- Municipal Government
- Mapping Companies
- Electric and Gas Utilities
- Communications Service Providers
- Engineering Consultants
- Roadway Agencies
- Cadastres
- Federal/Central Government Agencies
- Oil and Gas Exploration Companies
- Rail Owner-Operators

• Users:

- GIS professionals
- Mapping specialists
- Cartographers
- Engineers
- Designers
- Urban planners





What's new in Bentley Map V8i SELECTseries 1

Bentley Map V8i SELECTseries 1 - What's New

- 3D smart object editing
- Oracle Spatial editing
 - 3D objects support
 - ProjectWise Links and design links support with Oracle Spatial persistence
 - Simpler register feature process
- Dynamic labeling of features
- Joins between features
- Promote to XFM tool
- Search, browse and report
 - Multi-features attribute editing
- Spatial analysis and presentation
 - Overlays performance improvement
 - Overlay outputs fully attributed features
- Polygon split/merge
- Interoperability
 - GML import/export
 - Publish to i-model (for use in ProjectWise Navigator)
 - Attribute values used as the imported element elevation